

Pİ TOWER 225

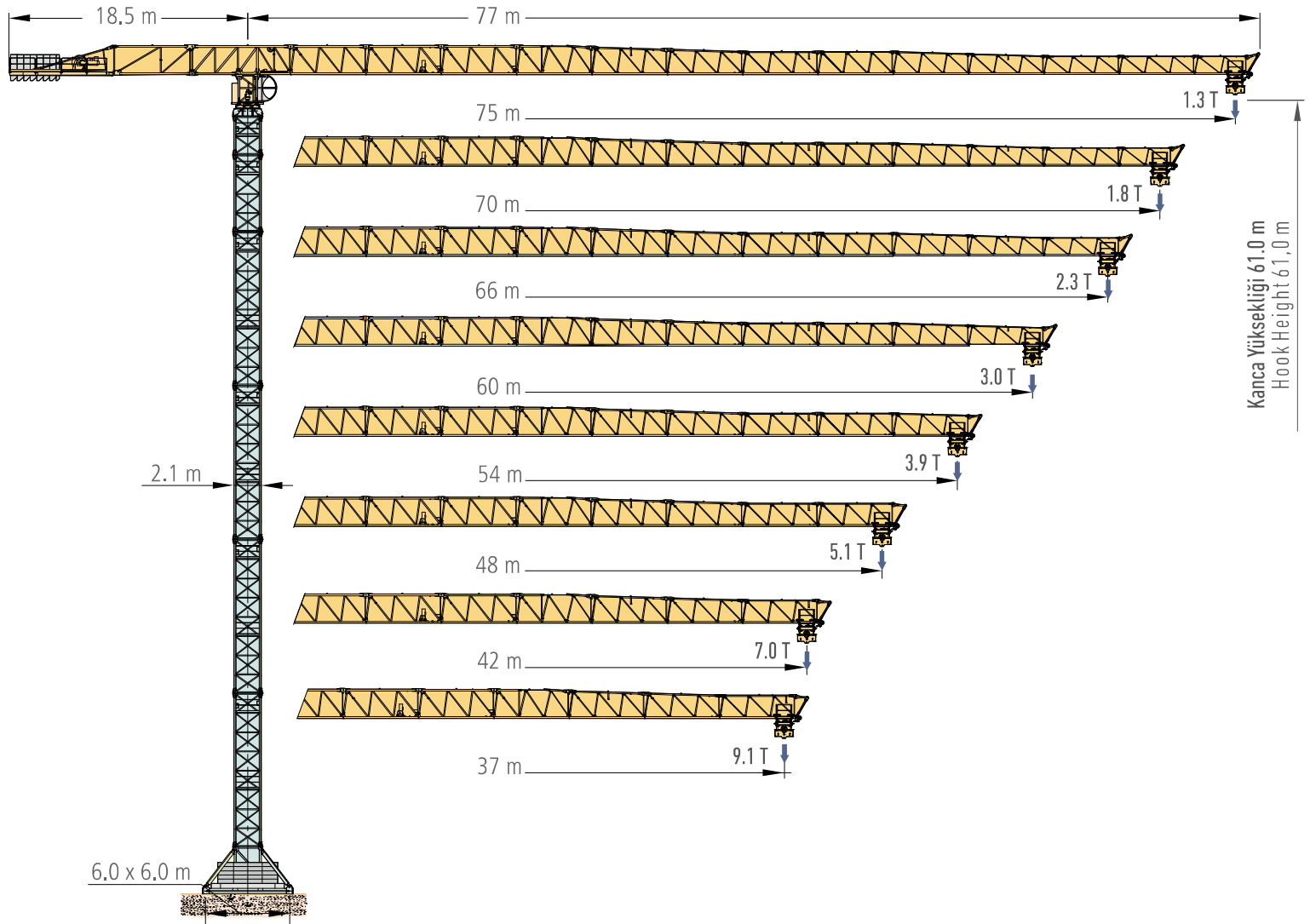
Pİ KULE 225

Free Standing at 61,0 meter
61.0 metrede SERBEST DURAN

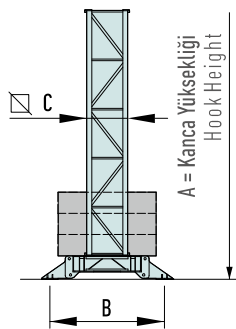
Maksimum kaldırma kapasitesi
Max. lifting capacity **12000 kg**

En uçta Maks. kaldırma kapasitesi
Max. Lifting capacity at jib end **1300 kg**

Maksimum çalışma yarıçapı
Max. working radius **75.0 m**

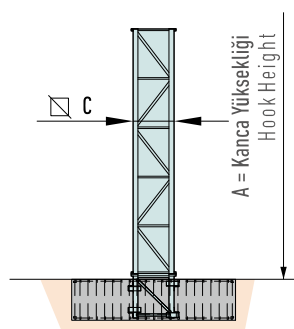


SABİT TABLA
FIXED BASE



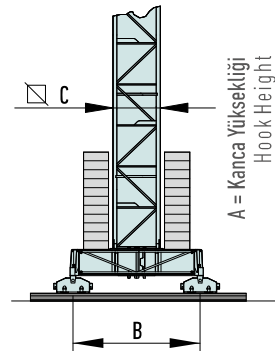
| | |
|---|-----------|
| A | 61,2 m |
| B | 6,0 x 6,0 |
| C | 2,10 |

TEMELE KURULUM
FOUNDATION ELEMENT



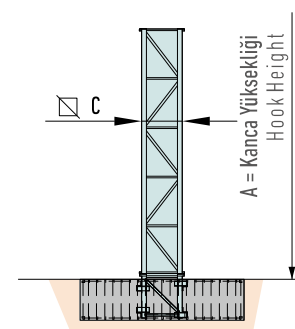
| | | |
|---|--------|----------|
| A | 57,8 m | 137,45 m |
| B | | |
| C | 2,10 | 2,10 |

HAREKETLİ TABLA
TRAVELLING BASE



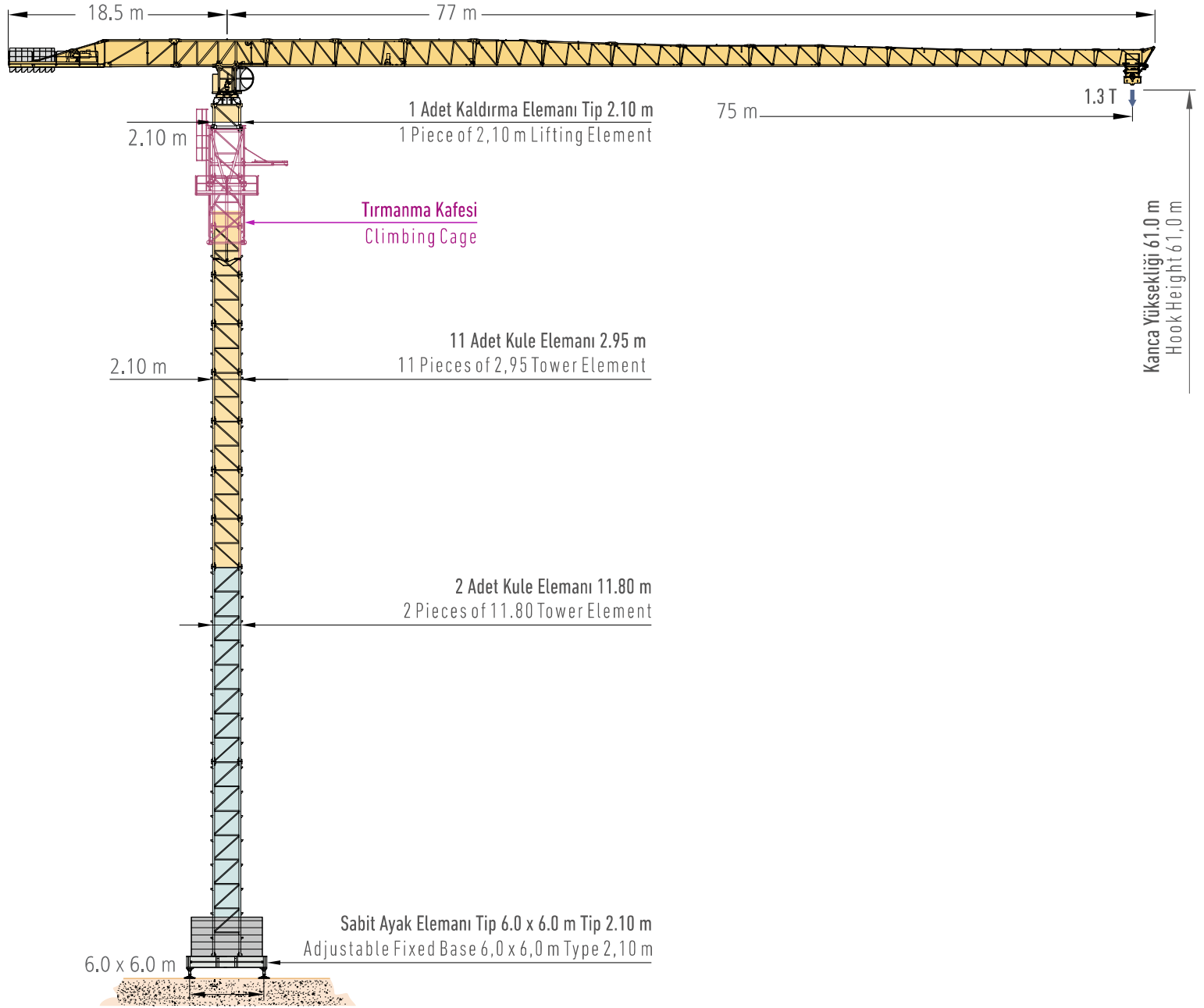
| | |
|---|--------|
| A | 62,0 m |
| B | 6 x 6 |
| C | 2,10 |

BOOSTER TİP TEMELE KURULUM
BOOSTER TYPE FOUNDATION ELEMENT



| | | |
|---|--------|----------|
| A | 63,6 m | 137,45 m |
| B | | |
| C | 2,10 | 2,10 |

Climbing Type , Free Standing at 50,3 meter
Kendi Kendine Yükselen 50.3 metrede SERBEST DURAN



75 m 2.10 m 1 Adet Kaldırma Elemanı Tip 2.10 m
1 Piece of 2,10 m Lifting Element

Kanca Yüksekliği 137,45 m
Hook Height 137,45 m

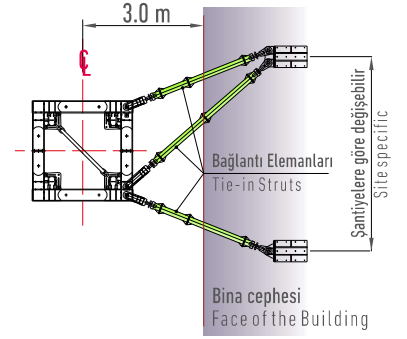
Tırmanma Kafesi
Climbing Cage

Self Climbing Type Kendi Kendine Yükselen

2.10 m 38 Adet Kule Temel Elemanı Tip 2.95 m
38 Pieces of 2.95 m Tower Element

Bağlantı Yeri 103,5 m
Point of Contact 103,5 m

Bağlantı Detayı Tie-in Detail
Plan Görünüşü Plan View



Bağlantı Yeri 74,0 m
Point of Contact 74,0 m

Not : Bağlama aparatları ve yerleri şantiye koşullarına göre değişiklik gösterebilir. Tırmanma sırasında bom bina yüzeyine daima paralel olmalıdır.

Note: Tie-in installations may vary according to the job site conditions. The jib must be parallel to the face of building when climbing.

Bağlantı Yeri 41,55 m
Point of Contact 41,55 m

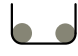
2.10 m 2 Adet Kule Temel Elemanı Tip 11.80 m
2 Pieces of 11.80 m Tower Element

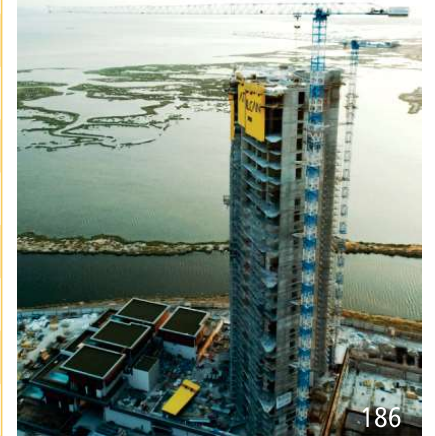
1 Adet Temel Elemanı Tip 2.10 m
1 Foundation element Type 2,10 m



Load Diagram Yük Diyagramı

PI TOWER 225 PI KULE 225


| Maksimum Güvenli Çalışma Yüğü Max. Safely Working Load | | 6.000 kg  | | | | | | | |
|--|----|---|------|------|------|---------|------|------|------|
| Maksimum Güvenli Çalışma Yüğü Mesafesi Max. Safely Working Load Range | | Bom (m) | | | | Jib (m) | | | |
| | | 37 | 42 | 48 | 54 | 60 | 66 | 70 | 75 |
| Yarıçap (m) Radius (m) | 12 | 6000 | 6000 | 6000 | 6000 | 6000 | 6000 | 6000 | 6000 |
| | 14 | 6000 | 6000 | 6000 | 6000 | 6000 | 6000 | 6000 | 6000 |
| | 16 | 6000 | 6000 | 6000 | 6000 | 6000 | 6000 | 6000 | 6000 |
| | 18 | 6000 | 6000 | 6000 | 6000 | 6000 | 6000 | 6000 | 6000 |
| | 20 | 6000 | 6000 | 6000 | 6000 | 6000 | 6000 | 6000 | 6000 |
| | 22 | 6000 | 6000 | 6000 | 6000 | 6000 | 6000 | 6000 | 6000 |
| | 24 | 6000 | 6000 | 6000 | 6000 | 6000 | 6000 | 6000 | 6000 |
| | 26 | 6000 | 6000 | 6000 | 6000 | 6000 | 6000 | 6000 | 6000 |
| | 28 | 6000 | 6000 | 6000 | 6000 | 6000 | 6000 | 6000 | 6000 |
| | 30 | 6000 | 6000 | 6000 | 6000 | 6000 | 6000 | 6000 | 5991 |
| | 32 | 6000 | 6000 | 6000 | 6000 | 6000 | 6000 | 6000 | 5517 |
| | 34 | 6000 | 6000 | 6000 | 6000 | 6000 | 6000 | 6000 | 5099 |
| | 36 | 6000 | 6000 | 6000 | 6000 | 6000 | 5835 | 5702 | 4730 |
| | 37 | 6000 | 6000 | 6000 | 6000 | 6000 | 5635 | 5298 | 4560 |
| | 38 | | 6000 | 6000 | 6000 | 5928 | 5446 | 5112 | 4399 |
| | 40 | | 6000 | 6000 | 6000 | 5554 | 5096 | 4937 | 4103 |
| | 42 | | 6000 | 6000 | 5706 | 5216 | 4780 | 4613 | 3835 |
| | 44 | | | 5921 | 5376 | 4909 | 4493 | 4321 | 3592 |
| | 46 | | | 5597 | 5076 | 4229 | 4232 | 4055 | 3371 |
| | 48 | | | 5300 | 4801 | 4373 | 3993 | 3592 | 3168 |
| | 50 | | | | 4548 | 4138 | 3773 | 3388 | 2982 |
| | 52 | | | | 4315 | 3921 | 3571 | 3201 | 2810 |
| | 54 | | | | 4100 | 3720 | 3383 | 3027 | 2651 |
| | 56 | | | | | 3534 | 3209 | 2866 | 2504 |
| | 58 | | | | | 3361 | 3048 | 2717 | 2367 |
| 60 | | | | | 3200 | 2897 | 2577 | 2239 | |
| 62 | | | | | | 2756 | 2447 | 2120 | |
| 64 | | | | | | 2624 | 2324 | 2008 | |
| 66 | | | | | | 2500 | 2210 | 1903 | |
| 68 | | | | | | | 2102 | 1804 | |
| 70 | | | | | | | 2000 | 1711 | |
| 72 | | | | | | | | 1623 | |
| 74 | | | | | | | | 1540 | |
| 75 | | | | | | | | 1500 | |

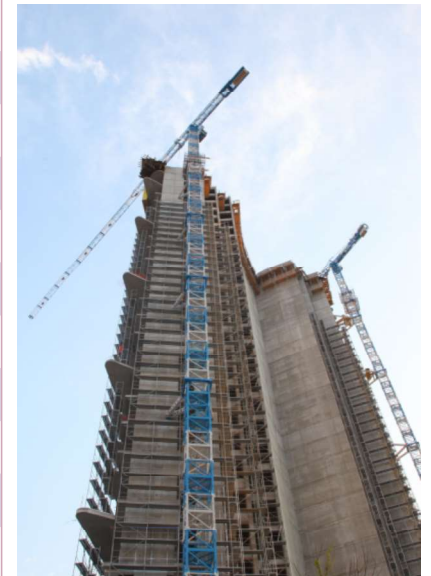


Pİ TOWER 225






Pİ KULE 225

Load Diagram Yük Diyagramı

| Maksimum Güvenli Çalışma Yüğü Max. Safely Working Load | | 12.000 kg  | | | | | | | |
|--|----|--|-------|-------|-------|---------|-------|-------|-------|
| Maksimum Güvenli Çalışma Yüğü Mesafesi Max. Safely Working Load Range | | Bom (m) | | | | Jib (m) | | | |
| | | 37 | 42 | 48 | 54 | 60 | 66 | 70 | 75 |
| Yarıçap (m) Radius (m) | 12 | 12000 | 12000 | 12000 | 12000 | 12000 | 12000 | 12000 | 12000 |
| | 14 | 12000 | 12000 | 12000 | 12000 | 12000 | 12000 | 12000 | 12000 |
| | 16 | 12000 | 12000 | 12000 | 12000 | 12000 | 12000 | 12000 | 12000 |
| | 18 | 12000 | 12000 | 12000 | 12000 | 12000 | 12000 | 12000 | 12000 |
| | 20 | 12000 | 12000 | 12000 | 12000 | 12000 | 11665 | 12000 | 10925 |
| | 22 | 12000 | 12000 | 12000 | 12000 | 11260 | 10415 | 10681 | 9640 |
| | 24 | 12000 | 12000 | 12000 | 11021 | 10152 | 9379 | 9523 | 8580 |
| | 26 | 12000 | 12000 | 10954 | 10020 | 9220 | 8508 | 8564 | 7703 |
| | 28 | 12000 | 11428 | 10031 | 9166 | 8424 | 7765 | 7758 | 6965 |
| | 30 | 11665 | 10536 | 9235 | 8428 | 7737 | 7123 | 7070 | 6335 |
| | 32 | 10815 | 9758 | 8540 | 7785 | 7139 | 6564 | 6476 | 5791 |
| | 34 | 10067 | 9074 | 7929 | 7220 | 6612 | 6072 | 5958 | 5317 |
| | 36 | 9404 | 8467 | 7387 | 6718 | 6145 | 5635 | 5502 | 4899 |
| | 37 | 9100 | 8189 | 7139 | 6488 | 5931 | 5435 | 5098 | 4530 |
| | 38 | | 7926 | 6904 | 6471 | 5728 | 5246 | 4912 | 4199 |
| | 40 | | 7439 | 6469 | 5869 | 5354 | 4896 | 4737 | 3903 |
| | 42 | | 7000 | 6077 | 5506 | 5016 | 4580 | 4213 | 3635 |
| | 44 | | | 5721 | 5176 | 4709 | 4293 | 4121 | 3392 |
| | 46 | | | 5397 | 4876 | 4429 | 4032 | 3855 | 3171 |
| | 48 | | | 5100 | 4601 | 4173 | 3793 | 3392 | 2968 |
| | 50 | | | | 4348 | 3938 | 3573 | 3188 | 2782 |
| 52 | | | | 4115 | 3721 | 3371 | 3001 | 2610 | |
| 54 | | | | 3900 | 3520 | 3183 | 2827 | 2451 | |
| 56 | | | | | 3334 | 3009 | 2666 | 2304 | |
| 58 | | | | | 3161 | 2848 | 2517 | 2167 | |
| 60 | | | | | 3000 | 2697 | 2377 | 2039 | |
| 62 | | | | | | 2556 | 2247 | 1920 | |
| 64 | | | | | | 2424 | 2124 | 1808 | |
| 66 | | | | | | 2300 | 2010 | 1703 | |
| 68 | | | | | | | 1902 | 1604 | |
| 70 | | | | | | | 1800 | 1511 | |
| 72 | | | | | | | | 1423 | |
| 74 | | | | | | | | 1340 | |
| 75 | | | | | | | | 1300 | |



Technical Specifications Teknik Özellikler

| | | Hız Speed | | Güç Power | | | | |
|--|---|------------------------------|---------------------|-----------------|---|--------------------|---|--------------------|
| Kule Dönüş Hızı Tower Slewing Speed |  | Max 0,75 r.p.m - 5 Speed/Hız | | 3 x 75 Nm | | | | |
| Araba Hızı Trolley Speed |  | 0 - 60 m/min - 5 Speed/Hız | | 7,5 kW (12 Ton) | | | | |
| Yürüyüş Hızı Travelling Speed |  | 0 - 19 m/min | | 4 x 4 kW | | | | |
| Tip Type | Güç Power | | Kablo Cable m | Adım Step |  | |  | |
| | CV - ch PS - hp | kW | | | Yükleme Load kg | Hız Speed m/min | Yükleme Load kg | Hız Speed m/min |
| Lebus | 75 | 55 | 550 | 1 | 6000 | 7,3 | 12000 | 3,65 |
| | | | | 2 | 6000 | 21,9 | 12000 | 10,95 |
| | | | | 3 | 6000 | 36,51 | 12000 | 18,25 |
| | | | | 4 | 3700 | 58,41 | 7400 | 29,21 |
| | | | | 5 | 2900 | 73,01 | 5800 | 36,41 |
| Toplam Güç İhtiyacı Total Installed Power | | | 55 kW (75 HP) | | | | | |
| | | | 95 kW | | | | | |

