

Pİ TOWER 41 Pİ KULE 41

Maksimum kaldırma kapasitesi
Max. lifting capacity

3000 kg

En uçta Maks. kaldırma kapasitesi
Max. Lifting capacity at jib end

750 kg

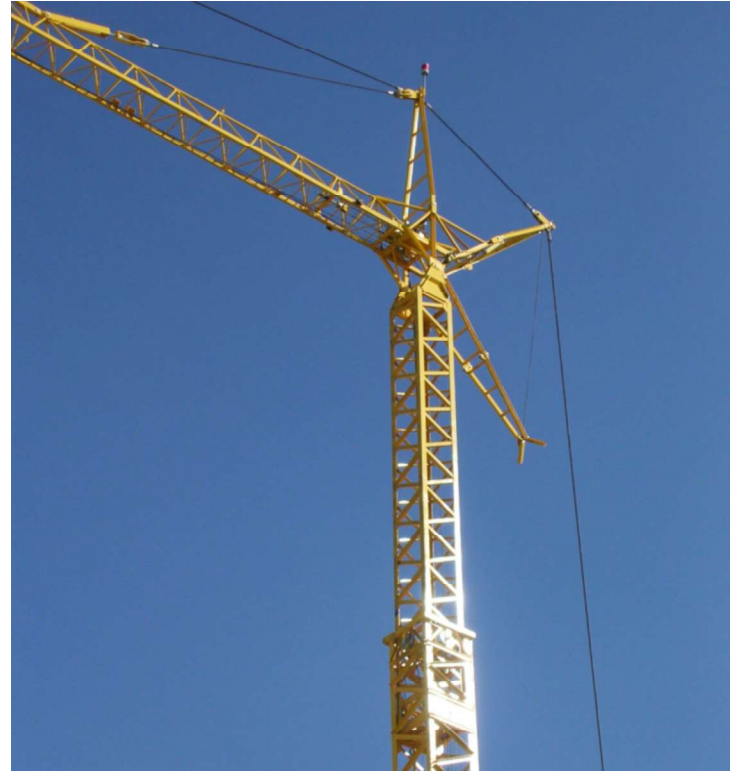
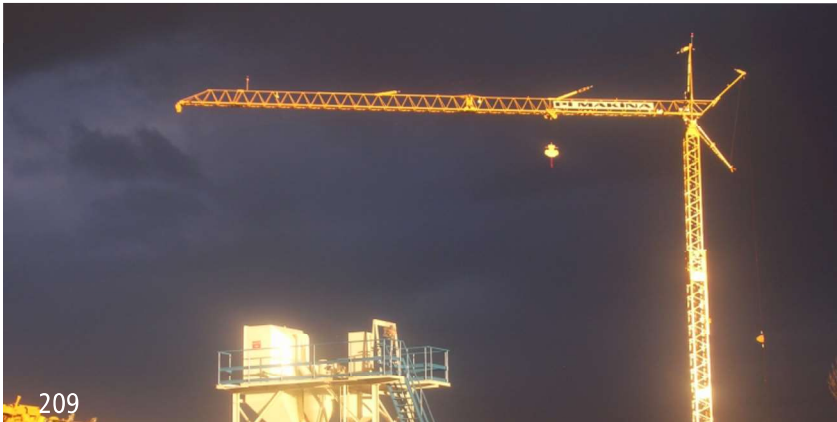
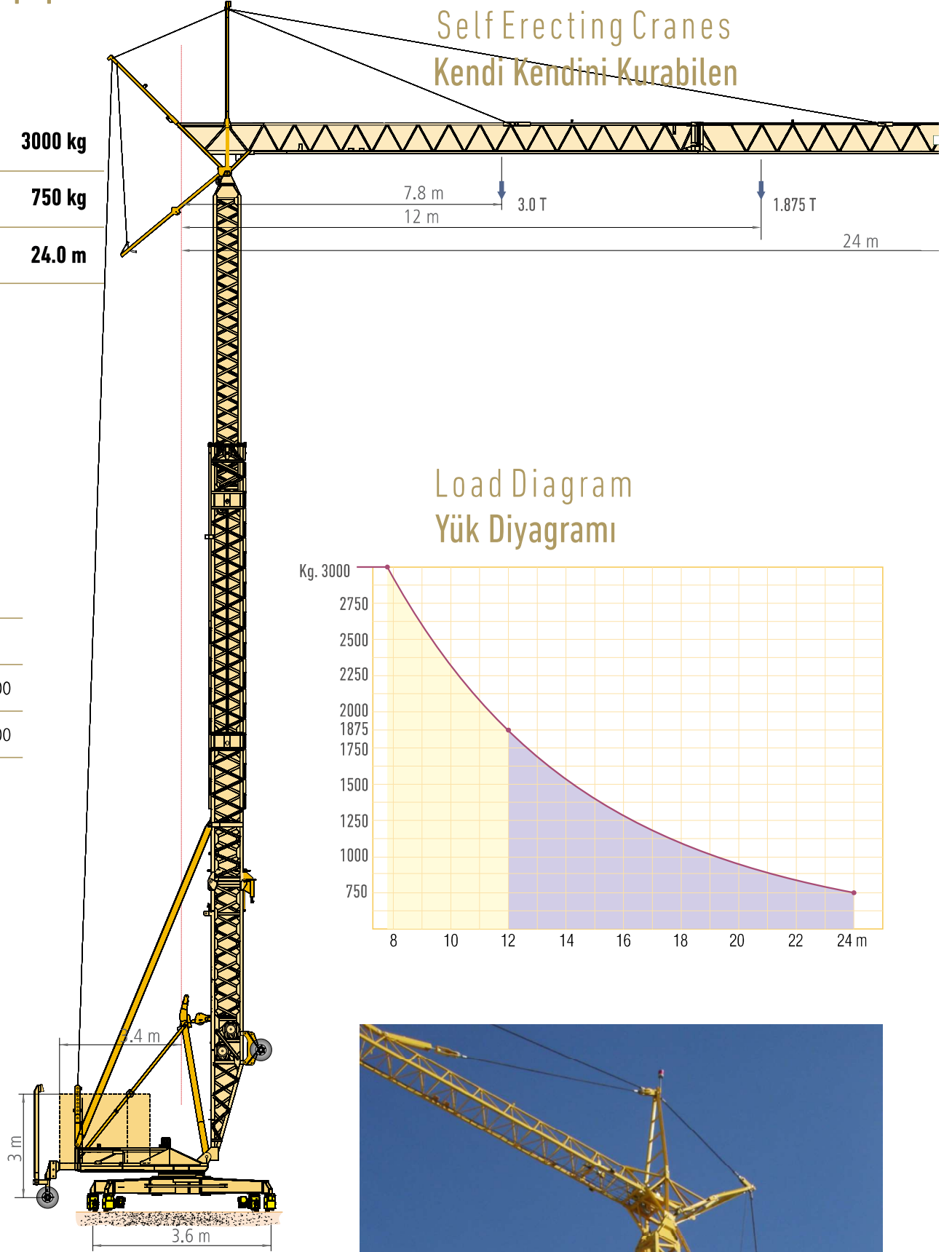
Maksimum çalışma yarıçapı
Max. working radius

24.0 m

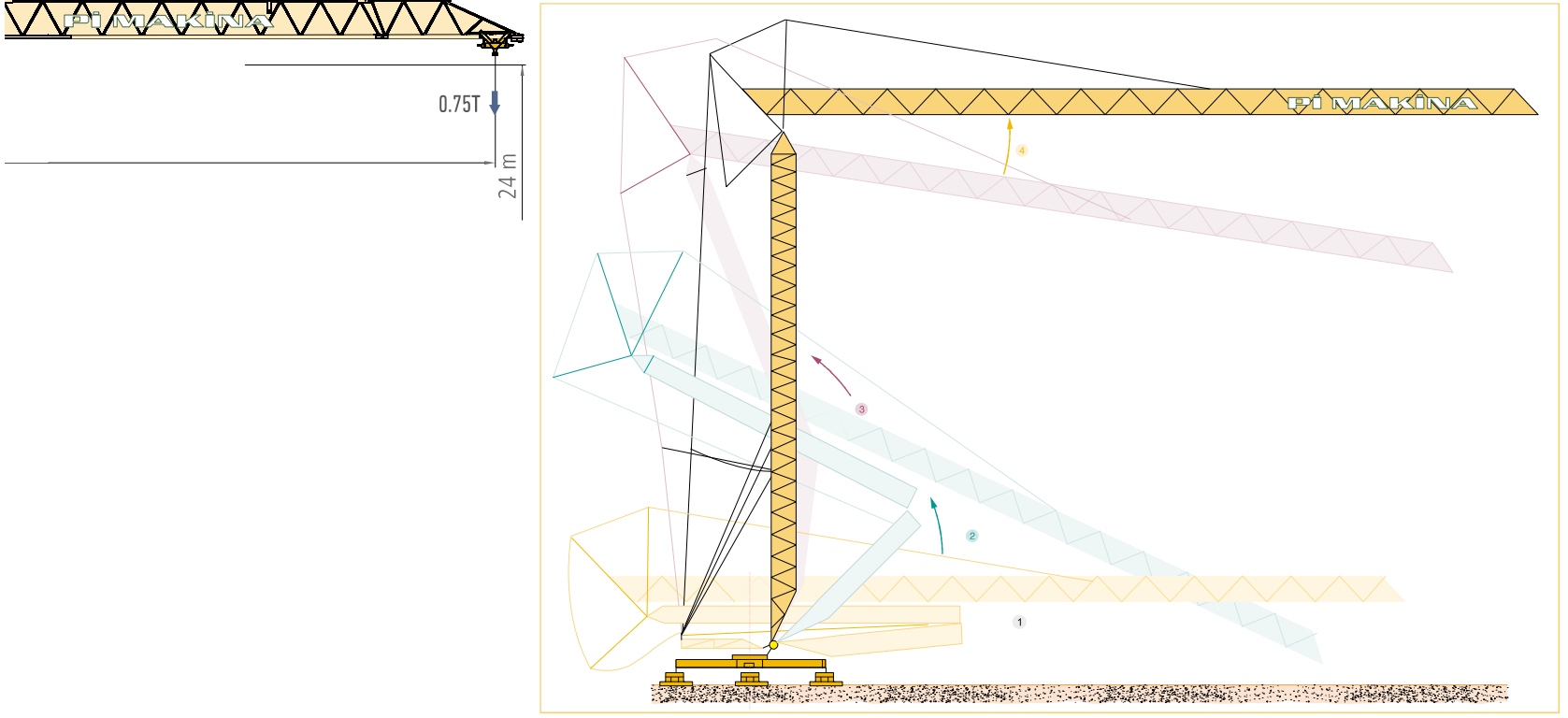
Bom Balast Ağırlığı
Boom Ballast Weight (kg)

Zemin Balast Ağırlığı
Base Ballast Weight (kg) 11400

Kule Vinç Toplam Ağırlığı
Total Weight of Crane (kg) 11000



Assembly Phases of Cranes Kule Vinci Kuruluş Aşamaları



Technical Specifications Teknik Özellikler

		Hız Speed	Güç Power
Kule Dönüş Hızı Tower Slewing Speed		Max 0,8 r.p.m	2,0 HP
Araba Hızı Trolley Speed		0 - 30 m/min	1,5 HP
Yürüyüş Hızı Travelling Speed		0 - 26 m/min	0,75 HP
Kaldırma Hızı (Yavaş - Hızlı) Lifting Speed (Slow - Fast)		18 - 36 m/min	6,0 HP

Transportation Dimensions of Crane Kule Vincin Nakil Ölçüleri

